

# ABC Foundation



## MISSION STATEMENT

To enrich the lives of all people by:

- Connecting donors with community needs
- Building permanent funds for charitable giving
- Distributing scholarships and grants
- Leading and collaborating to address community opportunities

## VISION

The central purpose of a community foundation is to serve the needs and philanthropic aims of donors who wish to better their community, now and in the future. Community foundations do this by providing donors with flexible, efficient, and tax-effective ways to ensure their charitable giving achieves the greatest possible impact.

## SPOTLIGHT

## OVERVIEW

TOTAL ASSETS: 156 Funds in Total

**\$17,400,000**

TOTAL GRANTS: 2 New Funds Established

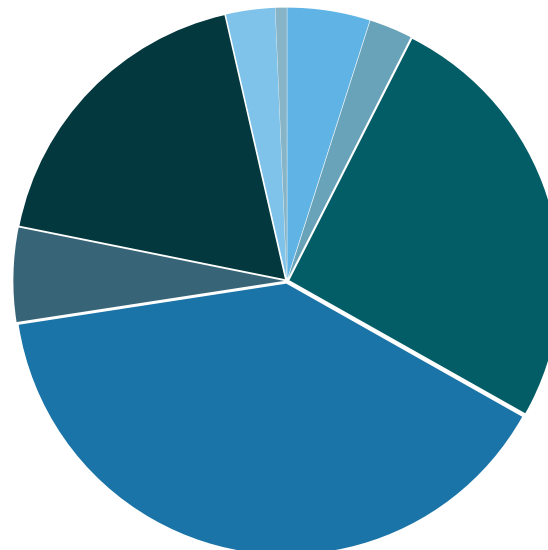
**Over \$791,000**

TOTAL GIFTS: 4 Affiliates

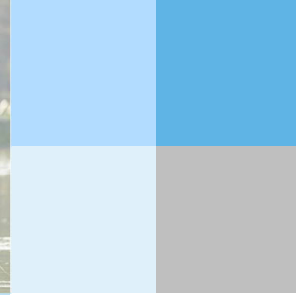
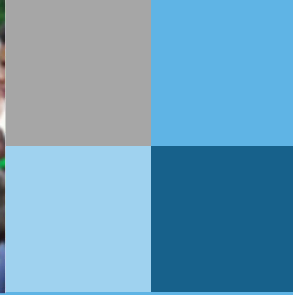
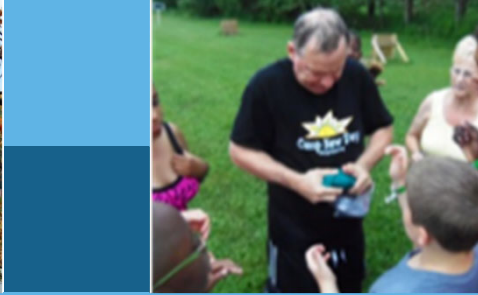
**Over \$754,000**

**30 Years** of Local Philanthropy. Over **\$6.8 million** in grants and scholarships awarded since 1988.

## OUR GRANT AWARDS



■ Arts and Culture	\$36,500
■ Youth Development	\$19,000
■ Education	\$190,300
■ Environment	\$292,000
■ Health	\$41,400
■ Human Services	\$135,200
■ Recreation	\$21,600
■ Other	\$5,000



# ABC Foundation



## 10 REASONS PEOPLE GIVE THROUGH OUR COMMUNITY FOUNDATION

- 1 We are a **local organization** with deep roots in the community.
- 2 We have **broad expertise** on community issues and needs.
- 3 We provide highly **personalized service** tailored to each individual's charitable and financial interests.
- 4 Our funds help people **invest in the causes** they care about most.
- 5 We accept a wide **variety of assets**, and can facilitate even the most complex forms of giving.
- 6 We partner with **professional advisors** to create highly effective approaches to charitable giving.
- 7 We offer maximum **tax advantage** for most gifts under state and federal law.
- 8 We **multiply the impact** of gift dollars by pooling them with other gifts and grants.
- 9 We build **endowment funds** that benefit the community forever and help create personal legacies.
- 10 We are a collaborative **community leader**, coordinating resources to create positive change.

## Charitable Funds

Great giving options. Choose the one that is right for you.

### Unrestricted Funds

Your gift is highly flexible and available to meet the breadth of community needs—including future needs that may not yet be imagined. Your community foundation's program experts evaluate all aspects of community wellbeing—arts and culture, economic development, education, environment, health and human services, neighborhood revitalization and more. Unrestricted gifts empower us to make strategic grants, where need and opportunity are greatest.

### Field of Interest Funds

Focus your gift on an important area of community life, such as enriching education, safeguarding health, strengthening families, improving neighborhoods, cultivating arts or protecting the environment. You identify your personal interest when making your gift; our board awards grants to community organizations and programs that are making a difference in the area you select.

### Donor Advised Funds

Enjoy ongoing involvement. When you establish a Donor Advised Fund, you work with our professional program staff to identify possible grants that may benefit a variety of causes and organizations important to you. Your recommendations are submitted to our local board for approval, and grants are distributed in the name of your fund.

### Designated Funds

Direct your charitable gift to benefit a specific nonprofit organization or purpose. Your gift can provide an ongoing funding stream for a senior center, museum or virtually any nonprofit charitable organization. Nonprofit organizations may also begin their own Agency Endowments through the community foundation, using our capabilities to accept complex gifts and to build a lasting endowment.

### Scholarships

Invest in your community's future and show students you care, all with the guidance and personal services of your community foundation. You determine the criteria students must meet to receive the scholarship you establish. With your assistance, students achieve their academic and career-oriented goals—from preschool to postgraduate work.

### Supporting Organizations

Use your gift to establish an excellent alternative to a private foundation—with only a fraction of the administrative responsibilities. You select some of the board members, maintain personal involvement, and support the causes and organizations you care about while enjoying the favorable tax treatment of a public charity. Leave investment management, startup costs, grant administration and reporting to the community foundation.

## Growing Your Gifts Through Endowment

